



**Abertillery**  
Learning Community



**ANNUAL REPORT TO PARENTS 2024-25**

## Content Page

---

Letter from the Chair of Governors	Page 3
Governing Body	Page 4
Election of Parent Governors	Page 5
Governing Body Annual Parents' Meeting	Page 5
Parental Petition Meeting	Page 5
Pupil Cohort Number	Page 6
Year 6 to 7 Transition	Page 6
Pupil Records	Page 7
School Term Dates	Page 7
Extra-Curricular Activities	Page 7
Pupil Wellbeing	Page 8-9
Additional Learning Needs	Page 9
Welsh	Page 9
School Facilities	Page 9-10
School Prospectus Changes	Page 10
Pupil Attendance	Page 10
Key Stage 4 School Performance 2024	Page 11
Financial Statement March 2024	Page 12
Celebrating Success	Page 13-18
SDP – Summary of Improvement Priorities	Page 19

Dear Parents and Carers,

It is my privilege to introduce the 2024/25 Annual Report, reflecting on a year of achievement, resilience and shared commitment across our school community.

Our pupils have continued to demonstrate ambition and determination. Academic outcomes show encouraging progress, with improvements across core subjects and a growing number of pupils achieving at the highest levels. These successes are a testament to the hard work of our pupils and the dedication of our teaching staff, who inspire and nurture every individual's potential.

Beyond the classroom, our community has flourished. Sporting achievements, creative performances and extracurricular opportunities have showcased the breadth of talent within our school. Highlights such as Matilda Jr captured the imagination of audiences and reflected the creativity, teamwork and passion of both pupils and staff.

We are proud of the significant improvements in attendance and behaviour. Pupils are engaging more positively with school life, supported by families and staff working together to create an environment where every child feels valued and encouraged to succeed. These advances reflect our shared vision of a respectful, inclusive and aspirational learning community.

Curriculum for Wales continues to embed, with targeted interventions and innovative provision ensuring that literacy, numeracy, and wider skills remain at the heart of learning.

Our Senedd ALC has also grown in strength, working with Abertillery Town Council to give pupils a platform to lead, influence and represent their peers with pride.

At the same time, the recent Estyn inspection has reminded us of the importance of continuing to move forward. While our strengths in well-being, attendance, and community engagement were recognised, inspectors highlighted the need to improve the consistency and quality of teaching, to provide more meaningful opportunities for literacy and numeracy across the curriculum and to strengthen our Welsh language provision. These are challenges we take seriously, and the governing body is committed to supporting leaders and staff in addressing them with clarity and determination.

As we celebrate our achievements, we also look ahead with optimism and resolve. Together, we will build on our successes, act on the recommendations, and ensure that every learner can raise aspirations, realise potential, and secure their future.

I would like to thank my fellow governors, past and present, for their service and dedication and to extend my sincere gratitude to you, our parents and carers, for your continued support, encouragement and partnership. It is through this collective effort that we will continue to strengthen Abertillery Learning Community for all our pupils.

With best wishes,

Mr D Tovey

Chair of Governors

## Abertillery 3-16 Governing Body

The Governing Body, Headteacher and Deputy Headteacher share responsibility for the strategic management of the school, acting within the framework set by National legislation and have separate and particular responsibilities for the selection and management of staff. The internal management of the school is the responsibility of the Headteacher. The full Governing Body meets at least once a term and additional sub-committees meetings are held half termly to discuss specific issues. The minutes of Governing Body meetings are available from the clerk to governors. The Governing Body for 2024-25 was:

## Chair

Mr Darryl Tovey  
Abertillery Learning Community  
Secondary Campus  
Alma Street  
Abertillery  
Blaenau Gwent  
NP13 1YL  
Tel: 01495 355911  
E-mail: [info@abertillery3-16.co.uk](mailto:info@abertillery3-16.co.uk)

**Governor Support Officer**

Education Achievement Service for South East  
Wales  
The Gateway  
Tredomen Park  
Hengoed  
Ystrad Mynach  
CF38 7EH  
Tel : 01443 864963  
E-mail: [Governor.support@sewaleseas.org.uk](mailto:Governor.support@sewaleseas.org.uk)

<u>Community Governors</u>	<u>Term ends</u>	<u>LA Appointed Governors</u>	<u>Term ends</u>
Suzanne Williams	26/05/2024	Darryl Tovey	13/09/2028
Rachael North	18/07/2027	Mike Davies	16/01/2028
Bosman Adedokun	17/07/2027	Helen Mifflin	04/11/2028
Andrew Davies	17/09/2028	Susan Edmunds	04/11/2028
Ieuan Briers	20/05/2029	Hayley Jones	04/11/2028
Joshua Albbiosu	17/09/2028		

<u>Parent Representative</u>	<u>Term ends</u>	<u>Teacher Representative</u>	<u>Term ends</u>
Damian Williams	03/05/2027	Jemma Welch	10/09/2028
Lian Daniels	06/06/2027	Jane Bruton	18/12/2028
Johanna Morris	20/05/2029	<u>Support Staff Representative</u>	
Natasha Bradbury	03/05/2027	Kim Evans	16/09/2025

### **Governors who have resigned during this period**

Bosman Adedokun Lian Daniels



## **Election of Parent Governors**

---

When a vacancy arises in the Governing Body for a parent representative, the school will inform all parents of the vacancy and will make the necessary arrangements for the consequent election. Every parent of a registered pupil at the school will be entitled to stand as a candidate and to vote at the election, and will be given the opportunity to do so. Each parent will be sent an email, which will indicate eligibility to stand, nominate and vote in elections and which will include a nomination form which provides for a proposed nomination, seconder, acceptance of nomination and any personal statement the nominee wishes to offer, to be returned to the school concerned by a set date.

Elections will be by confidential ballot.

Any parents wishing to be considered for a role on the governing body are welcome to express an interest to the school by emailing [info@abertillery3-16.co.uk](mailto:info@abertillery3-16.co.uk)

## **Governing Body Annual Parents' Meeting**

---

There were no parent meetings held by the governing body during the course of this year.

Should any parents wish to request such a meeting please contact Ms Natalie Gray [info@abertillery3-16.co.uk](mailto:info@abertillery3-16.co.uk) where further information will be provided.

## **Parental Petition Meeting**

---

No meetings were held under Section 94 of the Schools Standards and Organisation (Wales) Act 2013.

## Pupil Cohort Numbers

---

As of 27th June 2025 there were 1629 pupils on roll.

Year Group	Males	Females	Total Cohort (27/06/2025)
Nursery	88	53	141
Reception	48	41	89
Year 1	52	47	99
Year 2	56	67	123
Year 3	51	49	100
Year 4	56	44	100
Year 5	54	54	108
Year 6	74	60	134
Secondary Campus Year 7	62	64	126
Secondary Campus Year 8	70	84	154
Secondary Campus Year 9	78	73	151
Secondary Campus Year 10	83	71	154
Secondary Campus Year 11 (as of 27.06.25)	76	74	150
	848	781	1629

## Year 6 to 7 Transition

---

Transition events were held in 2024/25 so that all cluster schools and primary campuses could gain an insight into the life of Abertillery Learning Community Secondary Campus.

These events included learners meeting their form tutor, spending time with their new form class and peers, participation in some of the exciting learning opportunities that we deliver at the Secondary Campus and they also had an opportunity to sample our school meals, which will be free of charge.

All learners experienced following a five hour timetable for the day and also met key staff whilst they were with us throughout the day.

Some of the activities included; trampolining, tennis, mixed martial arts and gymnastics, dedicated subject workshops; including slime making in Science.

## Pupil Records

---

Pupil reports are kept electronically on our SIMS system and all pupils have a personal record folder which is available for inspection as required.

The main language of the school is English.

## School Term Dates

---

**2024/25:**

Date	Start	Half Term Starts	Half Term Ends	Term Ends
Autumn	02/09/2024	28/10/2024	01/11/2024	20/12/2024
Spring	06/01/2025	24/02/2025	28/02/2025	11/04/2025
Summer	28/04/2025	26/05/2025	30/05/2025	21/07/2025

**May Day - Monday 5th May 2025**

## Extra-Curricular Activities

---

Abertillery Learning Community offers an extensive range of extra-curricular activities for all pupils. These include:

### Lower School

Six Bells: Games, Clwb Cymraeg, Eco, Digi, Drawing and Book Club; Board and Card Games; Lego, Multi-skills, Photography and Mini Movers.

Roseheyworth Road: Rugby, Young Voices, Arts and Crafts, Sign Language Club, Wellbeing Club, Construction Club, Football Club, Summer Sports Club

Tillery Street: Choir, Chess, Netball, Creative, Book Club, Football Club, Programming, Rounders, Science, Wellbeing Warriors, Dodgeball, Welsh and Minecraft.

### Upper School

Breakfast Club, Chillax, Rugby, Football, Cricket, Number Crunchers, Board Games, Cwtch, Girls Football, Badminton, Clwb Cymraeg with Urdd, Netball, SWAG Club, Performing Shakespeare, Debate Club, Salon Club, Dance Club, Computing Club, Eco Club, Young Voices.

## Pupil Wellbeing

---

Pupil wellbeing has always been at the forefront of life at Abertillery Learning Community. The school works with a wide variety of outside agencies such as The Youth Service, Barod, Families First, MIND, In Reach, Barnardo's and school counsellors to ensure adequate support is provided to the pupils who need it. Our HWB space offers pupils a calm and peaceful environment should they need to talk, re-engage with education or just need time out.

Every campus has a wellbeing club at lunchtime which provides a safe space for pupils who struggle with the non-structured times at school, for whatever reason. All staff have undertaken Professional Learning regarding the importance of developing relationships with our pupils and understanding the challenges many of our pupils face. All campuses have ELSA trained staff (Emotional Literacy Support Assistants) and utilise this training to support pupils with identified emotional and wellbeing needs. The school counselling service can be accessed from Year 6 upwards. As a School we take part in national campaigns to raise awareness for mental health and wellbeing such as Anti-Bullying Week through assemblies and curriculum work. In Lower School, the RSE and PSE curriculum is delivered through the progressive Jigsaw programme which ensures we are meeting the requirements of the new RSE code. Lower School classes also undertake regular exercise through PE lessons. Worry boxes are accessible in all classes along with the Upper school Spot it, Sort it button on the website which is also accessible in Year 5 and 6 where children can share any concerns with teachers. School staff work closely with external agencies to support learners with their mental health and wellbeing and make referrals to agencies such as SPACE wellbeing, Space ND, CAMHS and Families First.

At the Upper school we are a full member of the School Health Research Network which is a policy practice research partnership between Welsh Government, Public Health Wales and Cardiff University. During the year student and school-level surveys, capturing key health and wellbeing metrics are completed by all year groups. These metrics are referenced in over 30 national policies and strategies, including the Whole School Approach to Mental Health and Wellbeing (2021) and Estyn's Healthy and Happy Report (2019). Through our participation in the SHRN it has generated robust evidence and data which is then used by key pastoral stakeholders to make changes to curriculum and support. Through regular pupil voice surveys across the campus most learners self-report positive physical and mental wellbeing.

Within the secondary campus there is a wide range of extra-curricular activities that take place during break time, lunchtime and after-school. These activities include but are not limited to, reading club, debate club, rugby, football, swimming, netball, gardening and computing club. These activities are well attended and provide a relaxed space to develop all aspects of pupils' wellbeing and subsequently develop positive relationships between staff and students that are conducive to learning.

All learners at Key Stage 3 take part in a bespoke Wellbeing programme for one hour once a fortnight which focuses on improving their physical, mental and emotional wellbeing. The programme works in conjunction with NHS Wales' "5 Ways of Wellbeing" where learners take part in a variety of different health promoting activities across the year.



The secondary campus has designated support systems in place including non-teaching Pastoral leads assigned to each Key Stage to support with any concerns a pupil may experience "in the moment". A family engagement officer, who cultivates home school links by supporting some of our most vulnerable pupils both at school and in the community and access to a new Wellbeing wing of the school, allocated to meet the evolving needs of our pupils. In addition to this, the secondary campus has a mentoring programme and provides opportunities for pupils to link with partner agencies, such as the police and fire service, through initiatives such as "the reflect project".

Additionally, all learners who attend the secondary campus are able to access a free breakfast and after school club which is provided by the "Chillax" charity provision. The Chillax Charity also provides free cooking and wellbeing workshops after school which is funded through a grant secured from Children in Need.

## **Additional Learning Needs**

---

The school has an Additional Learning Needs Policy, which encompasses the framework of identification, assessment and provision for pupils with additional educational needs. The school has two Additional Learning Needs Coordinators, Mrs Joanne Baker - Six Bells, Mrs Jade Davies - Roseheyworth Road, Mrs Sarah Hulme - Tillery Street and Mrs Joanna Evans - Upper School.

We also have two Complex Needs Resource Bases (CNRB) on site. Mrs Kath Webber manages the Lower School and Mrs Lindsey Watts manages the Upper School provision. The Local Authority allocates pupil placements to both resource bases.

## **Welsh**

---

Teachers use basic Welsh, where they can, across the school to address and praise pupils. 3-16 Staff and Lower School pupils are encouraged to participate in Duolingo competitions. Lower School award their Welsh Speakers of the Week and have a weekly Welsh assembly led by Criw Cymraeg. Lower School have achieved the Bronze Campus Cymraeg award.

## **School Facilities**

---

Abertillery Learning Community is proud to offer state-of-the-art facilities that create a vibrant and modern environment for learning.

Accessible toilet facilities are available on every floor for learners, staff, and visitors. All facilities are well-maintained, cleaned daily, and equipped with hot water, soap, and hand-drying options. Upper school toilets are cleaned throughout the day, ensuring the highest standards of hygiene. Cleaning at all campuses is provided by Blaenau Gwent Cleaning Services who work alongside our premises team.

Each campus features an indoor sports hall and community meeting rooms. Outdoor spaces include play yards, pitches, courts, and multi-use games areas, giving pupils plenty of opportunities for recreation and physical activity. Our Secondary Campus also features a lecture theatre, DT workshops, and fully equipped IT suites.

School meals are provided by Blaenau Gwent Catering Services, meeting healthy eating standards. Water fountains are available throughout the school so pupils can stay hydrated during the day.

## School Prospectus

---

There have been no changes to the school prospectus.

## Whole School Attendance Outcomes 2024/25

---

	2021-2022	2022-23	2023-24	2024-25
Y1	91.1	89.4	90.4	92.4
Y2	93.4	89	90.3	92.5
Y3	92.7	89.7	92.2	93.8
Y4	92.6	90	91.4	92.1
Y5	93.1	88.4	90.3	92.7
Y6	91.6	88.8	91.2	91.9
Y7	85.7	86.4	91.4	90.1
Y8	81.6	84.1	88	89.7
Y9	81.1	82.6	84.4	88.3
Y10	76.2	82.4	86.2	87.2
Y11	72.4	69.7	86	80.5
Total	86.5	85.5	89.3	91.7

## Key Stage 4 School Performance 2024

---

### Key Stage Four Academic Outcomes/Targets

	2019	2020 (CDG)	2021 (CAG)	Y11 2022 Outcomes (Y7 cohort entry 2017)	Y11 2023 Outcomes (Y7 cohort entry 2018)	Y11 2024 Outcomes (Y7 cohort entry 2019)	Y11 2025 Outcomes (Y7 cohort entry 2020) Targets	Y11 2026 (Y7 cohort entry 2021) Targets
<b>C9</b>	337.4	356.8	335.9	350.0	305.4	338.9	345.1	370.6
<b>Average Points – Literacy</b>	34.6	36.1	32.6	36.4	31.6	34.5	33.0	35.2
<b>Average Points- Numeracy</b>	33.5	36.6	35.1	33.8	31.2	33.8	34.4	35.8
<b>Average Points – Science</b>	27.3	32.2	32.7	35.0	28.7	32.8	31.2	36.2
<b>L2+ (Lang Only)</b>	33.0%	48.3%	41.1%	46.7%	25.0%	31.8%	35.3%	41.6%
<b>L2</b>	45.5%	56.8%	50.8%	64.2%	41.4%	51.5%	53.3%	57.1%
<b>L1</b>	97.7%	94.9%	87.9%	89.1%	84.4%	89.1%	90.0%	94.8%
<b>5A/A*</b>	8.0%	15.3%	12.1%	15.3%	6.3%	11.6%	10.0%	9.8%

### Abertillery Learning Community



#### 2024/2025 Budget Outturn

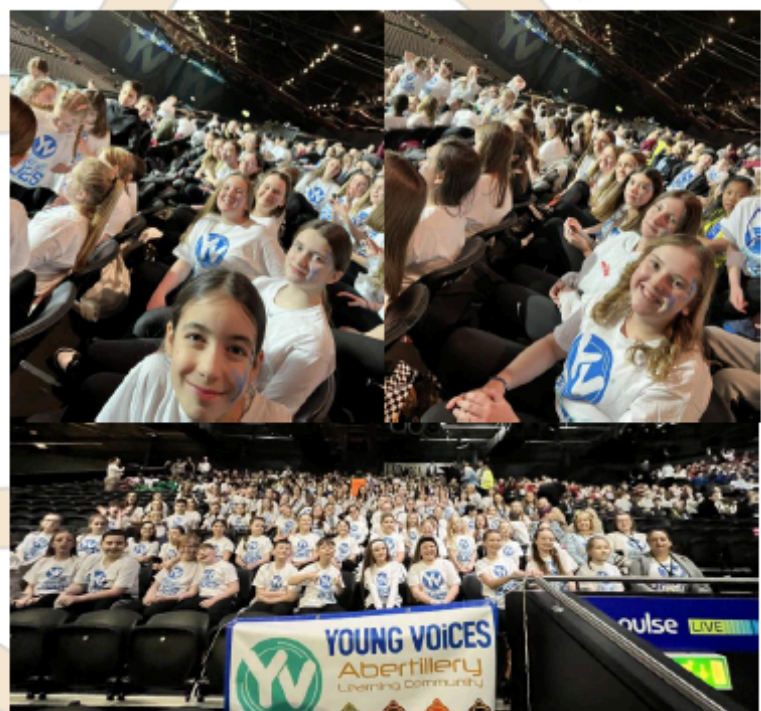
Funding	£10,000,706
2023/2024 Balance Brought Forward	£8,823
<b>Total</b>	<b>£10,009,529</b>
<b>Expenditure</b>	
Employees	£8,421,819
Other Employee Costs	£364,485
Utilities	£293,620
Capitation	£274,448
Premises	£320,017
Communications	£24,564
Transport	£16,628
Central Services	£911,806
<b>Total</b>	<b>£10,627,387</b>
<b>Income</b>	<b>£307,847</b>
Net Expenditure (Expenditure - Income)	£10,319,540
<b>Outturn (Funding - Net Expenditure)</b>	<b>-£310,011</b>



# CELEBRATING SUCCESS DURING 2024-25



4JK loved their visit to the local recycling centre where they learnt about the impact of fast fashion! We continued our reduce, reuse, recycle project back at school!



Our learners had a fantastic experience at Young Voices Concert 2025.



We had a visit from a local councillor and John from the recycling department who awarded us with an award for coming third in a battery collecting competition. Some of our Eco Council members received the award on behalf of the whole school. Amazing!





30 learners took part in a CyberFirst event. Consisting of a Fantasy Football League data game, a crack the code cryptography exercise and a 3D printing engineering exercise.



Year 3 had a great Bible experience listening to the story of Jesus. They commented on how well behaved the children were and the fantastic questions they asked throughout.



Year 1 were busy after reading 'The Disgusting Sandwich'! We have been learning how to make our own jam sandwiches ready to write a set of instructions for the badger in the story!



6KW went to the Pentref Community Event at the Caffi Tyleri. They created bug hotels and contributed to the Art mosaic. They proudly represented our school on ITV News.





6TW participated in a 3D printing workshop with The Blaenau Gwent Learning Zone. The children researched, designed and created castles. They then used Tinker CAD to make their final designs.



Senedd members attended an ALC meeting at the Council Chambers in Abertillery. They discussed many important school issues.



The Winter Prom fashion show was a great success; a full theatre came to watch our gorgeous models that had been prepared by our salon team!



Reception class had an informative session with EXPERIMENTAL Science learning all about Dan y mor, Under the Sea. We cleaned the ocean, rescued fish and even made our own puffer fish and jellyfish!





After reading 'Superworm' and discovering words that rhyme, Year 1 worked hard to find rhyming words and build them together using blocks!



Learners from the CNRB, Year 6 and Year 5/6 were privileged to participate in Six Bells Park Centenary celebrations. The children performed songs and took part in tennis, bowls and multi-skills activities. Each child was presented with a commemorative medal.



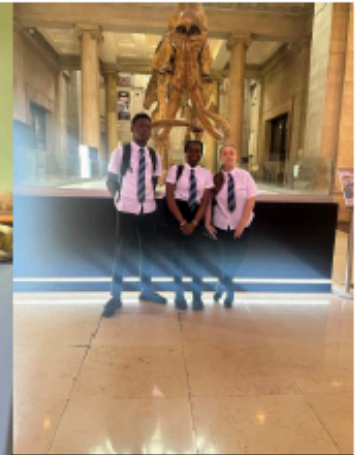
Year 3 had a great workshop with HSBC focusing on animals and their habitats and then comparing it to how we live and what we want and need!



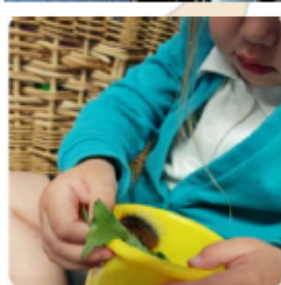
Year 10 Blaenau Gwent Cup Winners - brilliant game of rugby against King Henry, back and forth with some great rugby played and fantastic tries scored from both sides.

44-19 win for Abertillery, incredibly proud of the boys! Da iawn all!

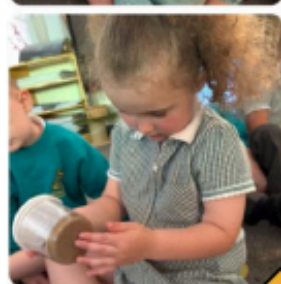




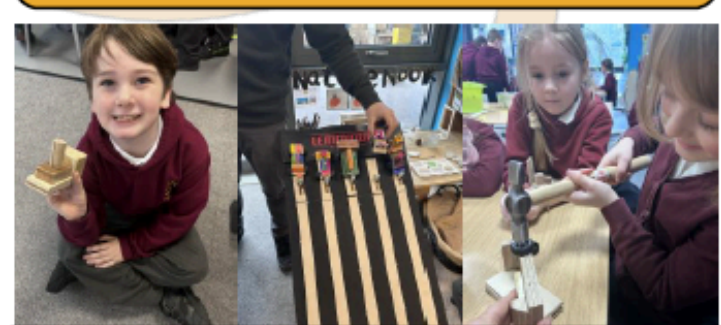
Our Upper school anti-racist pupil group attended Cardiff Museum this week for a workshop on Anti-colonialism. Pupils became curators for the session, helping the museum with ideas to see past what's on the surface and un-pick the true story behind paintings and historical objects.



Year 3 put on their scientific hats. They all made fantastic predictions about the absorbency of different rock types and concluded whether they were correct or incorrect.



Nursery and Reception enjoyed watching their little caterpillars. They learned that living things move, eat and grow.



Year 2 had a fantastic STEM session with Lemmiout Activities building and racing their own wooden cars!



# ALC PRODUCTION OF 'MATILDA JR.'



## SDP - Summary of Improvement Priorities: 2024-25

SLT Leads	Priorities for 24/25
LTu JWin ICa/DNe JDa	<p>Relationships and Wellbeing:</p> <ol style="list-style-type: none"> <li>1) Improve standards of wellbeing and behaviour for learning, including the reduction of pupil exclusions</li> <li>2) Improve standards of attendance</li> <li>3) Further develop whole school approaches to maintaining positive relationships using a range of strategies, including the PACE approach</li> </ol>
JWin ALJo JBa VBI	<p>Learning and Provision:</p> <ol style="list-style-type: none"> <li>1) Continue to strengthen provision for the progressive development of all pupils' literacy skills, with a specific focus on reading and oracy</li> <li>2) Develop strategies to ensure all pupils are stretched and challenged in their learning in order to secure progress</li> <li>3) Continue to improve the quality of teaching, feedback and assessment in line with the implementation of the feedback for learning policy and continued CfW developments</li> </ol>
SHe JWin MLe SHu	<p>Standards and Progress:</p> <ol style="list-style-type: none"> <li>1) Continue to raise standards across all key stages and specifically against key performance indicators at KS4</li> <li>2) Improve standards and performance of vulnerable pupils, those with low prior attainment and those who are more able and talented</li> <li>3) Further develop the use and analysis of whole school data to secure impact on progress</li> </ol>
TJa VWh	<p>Leadership:</p> <ol style="list-style-type: none"> <li>1) Secure progress against the governor self evaluation and ongoing improvement plan</li> <li>2) Develop staff to be anti-racist leaders within the organisation</li> <li>3) Continue to develop community links, provision and engagement opportunities across the school 3-16</li> <li>4) Maintain and continue to refine robust safeguarding processes across the school 3-16</li> </ol>